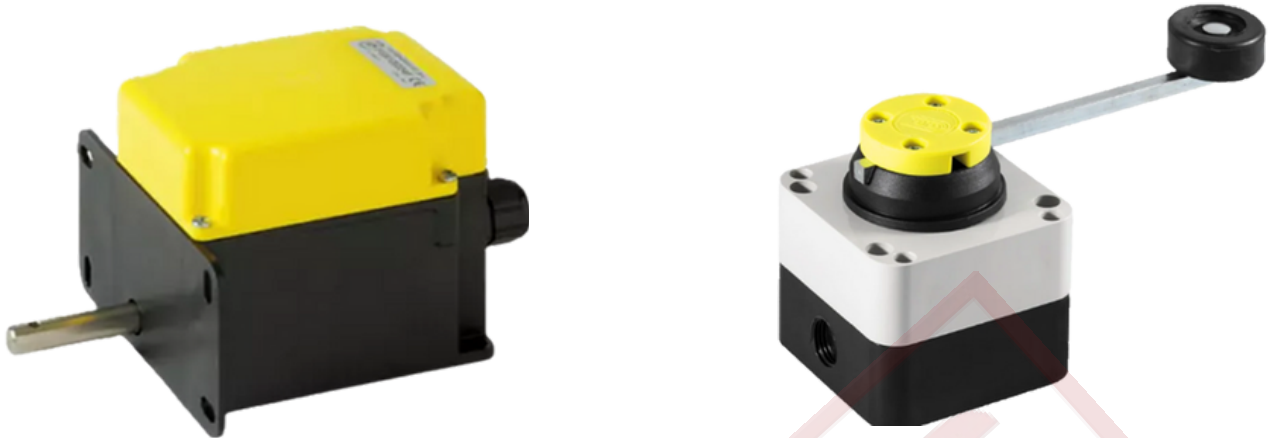


Limit Switch

“Reliable Position Detection for Industrial Applications”



CROSS BAR LIMIT SWITCH

A **Limit Switch** is an electromechanical device designed to detect the end-point limit of an object. Engineered for reliability and durability, it is widely used in industrial automation and machinery safety systems.

Geared Limit Switch: Heavy-duty for over hoisting and lowering safety. Includes emergency stop and travel stop.

Gravity/Counter Weight limit switch: An additional safety to the hoist to prevent the hook travel in case of failure of Main Travel limit Switch.



2 WAY LEVER



Some of Our Esteemed Clients



Our Other Verticals:

- Cranes & Hoists
- Floor Handling Equipment
- Mobility Solutions
- Automation & Robotics
- IOT Services
- Annual Maintenance contract
- Crane Kits
- Renewables

Our Strategic Alliance



Engineering Pvt. Ltd.



Contact Us:

CENTRAL MARKETING TEAM

Chhaya Verma

Business Coordination & Executive Assistant

M: +91 9313632144

Rishika Gandhi

Sales Executive – Business Development

M: +91 7863821608

E: growth@tacklers.in | W: www.tacklers.in

Corporate Office (Plant - 1):
Plot No. 5, 6, 7, Devraj Industrial Park,
Piplaj-Pirana Road, Piplaj,
Ahmedabad-382405, Gujarat, INDIA

Plant - 2:
Plot No. 613, Phase IV,
G.I.D.C., Vatva, Ahmedabad - 382445,
Gujarat, INDIA