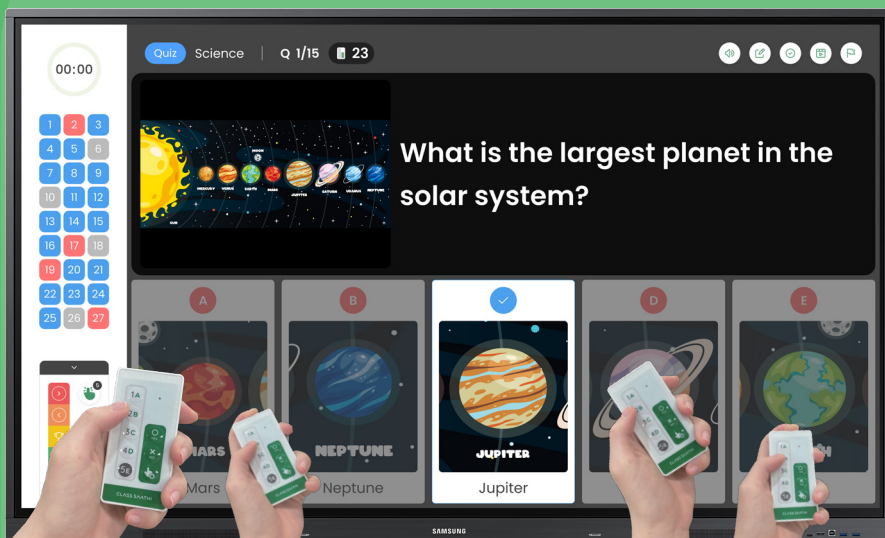


AI for Education



Teacher

Teaching Simplified, Results Amplified



Teach

Evaluate

Remediate



Saathi Genie

Quick question creation and insights

Features for Teachers



Saathi AI Features
(Create, Localize, Polish Questions)



No Internet required



Content
(Grade 1 to 10, All Subjects)



Gamification
(Saathink, Arcade Mode)



AI-Powered Lesson Plans



Widget Mode



Insights & Analytics



Tests & Homeworks



Community Quizzes



Interactive Quizzing



Class Kit

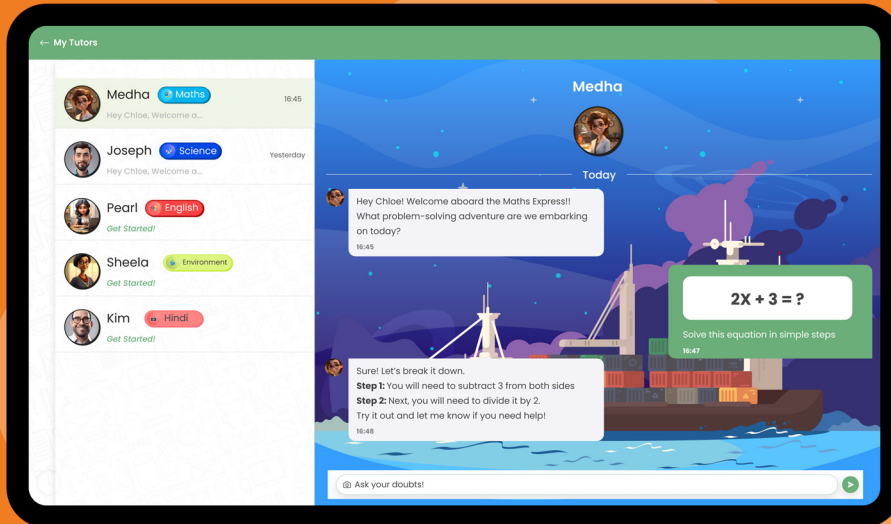


Bluetooth Clickers



Students

Learning Personalized, Scores Maximized



Learn

Practice

Master



Saathi Tutor

Instant doubt resolution

Features for Students



AI Saathi Tutor
(Personalized Doubt Solver)



**Personalized Quiz
Recommendation**



Content
(Grade 1 to 10, All Subjects)



Missions & Quests



Insights & Analytics



Tests & Homeworks



Rewards & Certificates

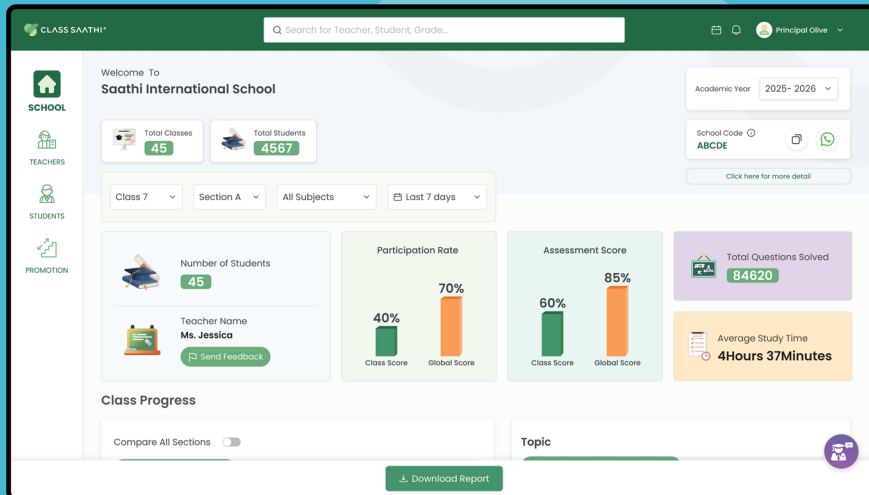


Daily Planner



Track Students' Performance, Celebrate Their Progress

Admin & Parents



Manage

Monitor

Scale

 **Saathi Assist**

Track student or class status instantly

Why Us?

- 1 **World-First** Assessment System using clicker technology, compatible across Windows, iOS, MacOS, and Android on any screen, including smartphones
- 2 Works **without Internet** connectivity in classrooms
- 3 Trusted by over **10,000+** Classrooms in **South Korea & India** (More than 15 Million questions solved)
- 4 **Customized** content platform with Saathi AI and an application for all stakeholders
- 5 Recognized by India AI, UNICEF, Samsung, Google, Fortune, Business World, CNBC, ADB, & UNESCO

"Make your school the **best school** with **Class Saathi**"
Write to us at saathi@tag-hive.com for a demo.

Class Saathi

How can a teacher instantly assess each student's understanding in real-time, without causing fear of judgment?

Introducing Class Saathi. This platform lets teachers ask questions while students respond using their own devices or handheld clickers. This not only engages learners but also provides real-time analytics that are readily available to parents and school administrators. Class Saathi enables research-backed learning, Anytime, Anywhere!



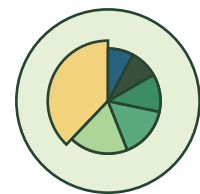
Give each student a voice



Help teachers assess easily & accurately



Help parents stay informed



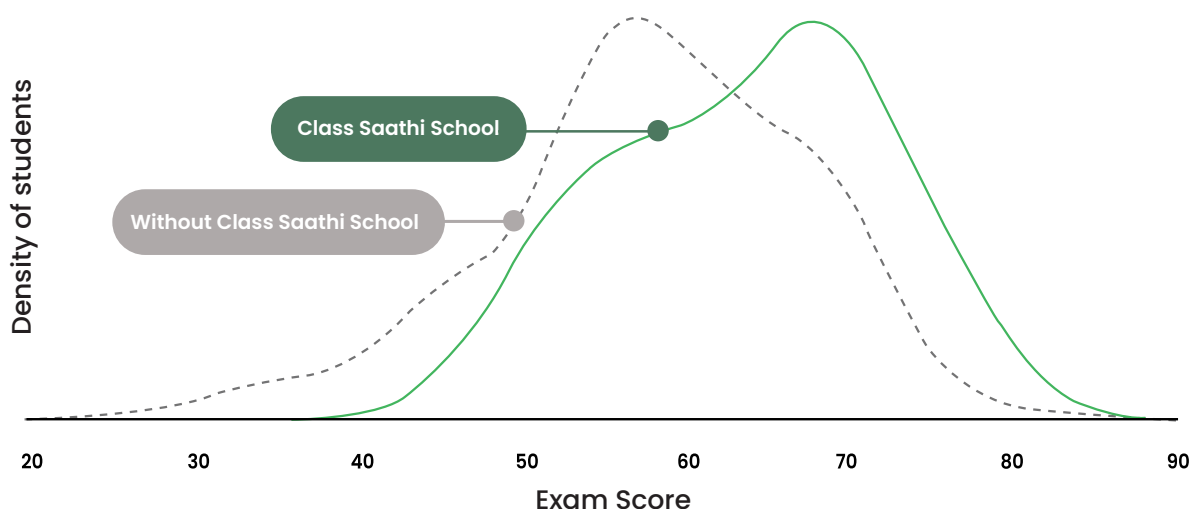
Enable admins take prompt actions

Impact

"Help students raise the bar, no matter where they are"

3x 
in student learning outcomes

100% 
in classroom participation





South Korea & India
www.tag-hive.com
saathi@tag-hive.com

SAMSUNG

KOICA
 Korea International
 Cooperation Agency

INDIAai

unicef



FORD FOUNDATION

FOREST PARTNERS

Google for Startups

 **unesco**

ADB