

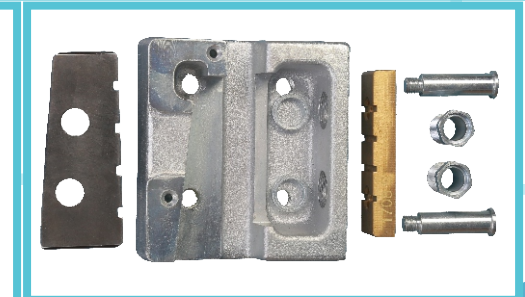
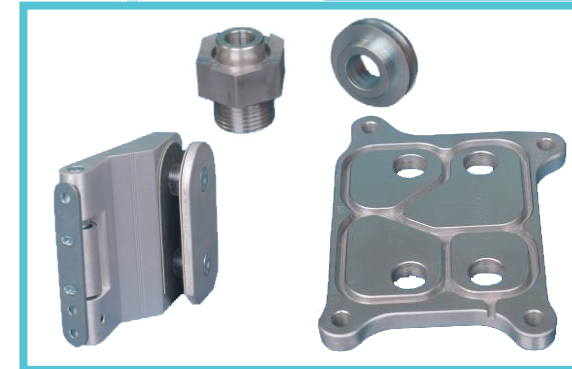
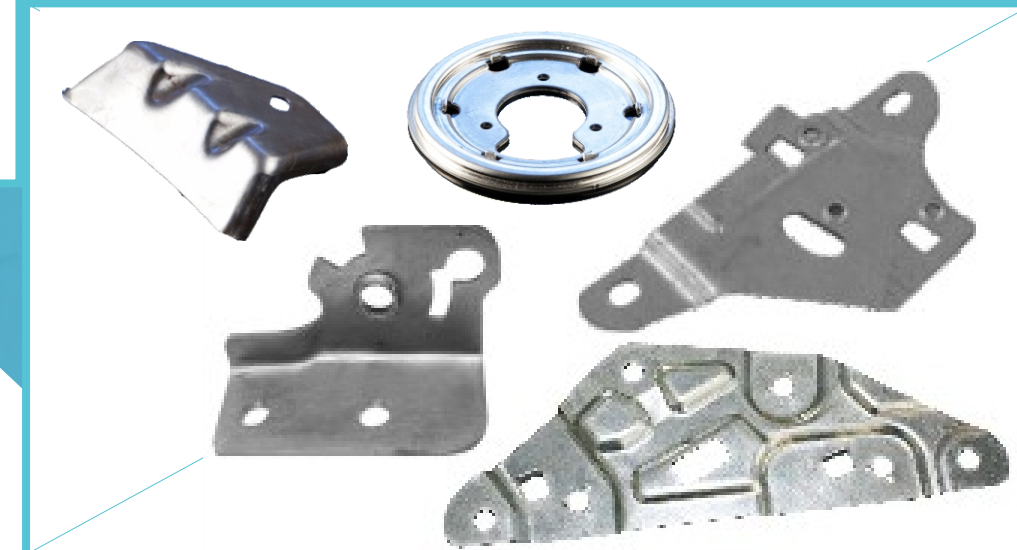
## Facilities



- 12 CNC Vertical Machining Centers
- 6 CNC Turning Centers
- 4 Multi Spindle Turning Centers
- 1 Polygon Turning Center
- CNC Horizontal Machining Center
- 12 Power Presses upto 400 Tons
- Orbital Riveting Machine
- Well Equipped Metrology

## Capabilities

- CNC Turning
- CNC Milling
- Stamping
- Plating
- Heat Treatment
- Welding
- Riveting
- Polishing
- Assemblies
- Sub Assemblies



**CMD PRECISION PRODUCTS PRIVATE LIMITED**



**CMD PRECISION PRODUCTS PRIVATE LIMITED**

Survey No: 433 / 11-15,  
Pappambakkam Village, Mannur to Koppur road,  
Thiruvallur District Tamil Nadu – 602 025 India.

Website : [www.cmdppl.com](http://www.cmdppl.com)

Mail ID :

Phone No :





## About Us

Sudarsan Technologies Inc, is Named as **CMD PRECISION PRODUCTS PRIVATE LIMITED.**

Incorporated in year 1993. CMDPPL is IATF-16949 certified organization and is committed to provide reliable service to customers.

CMDPPL along with its core engineering team ensure stringent quality norms are met at all stages to obtain products engineered, as precise as they were designed.

CMDPPL is a leading supplier of CNC machined components, sheet metal components, assemblies and sub assemblies for domestic and overseas customers.

CMDPPL is in the export business for the past 15 years and supplies products predominantly to USA, UK, Australia and Spain.

## Milestones

1993 YEAR OF INCORPORATION

1996 EXPORT COMMENCEMENT

1998 MOVED TO OUR OWN PREMISES

2000 FACILITY EXPANSION

2001 ISO CERTIFICATION

2005 ERP IMPLEMENTATION

2007 INTRODUCTION OF HIGH SPEED MACHINING

2008 FACILITY EXPANSION

2010 TS CERTIFICATION

2010 FACILITY EXPANSION AND CMM ADDED

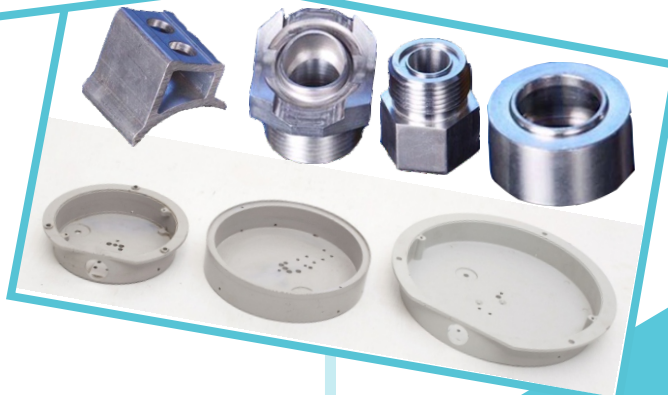
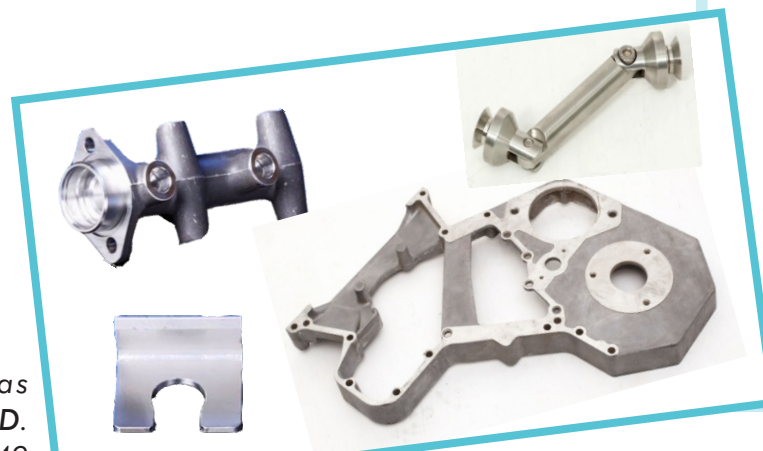
2013 FACILITY EXPANSION

2016 FACILITY EXPANSION

2018 SILVER JUBILEE YEAR

2018 FORMATION OF CMD PPL BY MERGING STI-Plant 1 ,2 &3

# CMD Precision Products Private Limited



## Why CMDPPL?

- Mass Production
- Competitive Pricing
- Quality components
- Timely Delivery
- Quick response

## Quality

CMDPPL builds quality as a habit and not as an act. It is our continued efforts to produce parts with zero defect.

## People

CMDPPL believes that employees are its core assets. Periodic training and multi-Skill programmes are provided to our employees.

## We Handle

- Aluminium
- Stainless Steel
- Brass
- Copper
- Mild Steel
- Cast Iron

## Sizes

- Circular components upto 300 mm
- Flat Components upto 1100 X 450 X 300 mm

## We supply To

- Automobile Industries
- Valve Industries
- Construction Industries
- Electrical Industries
- Overseas Customers

