



Introduction to Signode India Label Business



SIGNODE Printing Machines Availability

Harohalli:

- 12 Colour Press - Gallus Label Master 440.
- 12 Colour Press - Gallus EM-280.
- 9 Colour Press - Gallus EM-280.

Rudrapur:

- 12 Colour Press - Gallus EM-280.
- 9 Colour Press - Gallus EM-280.



Flexo Pressure Sensitive Decorative Labels



Functionality of Labels



Labeling

- Used for identification of products
- Can be used for raw material, WIP and Finished Goods



Tracking

- Used for tracking of products
- Reduction in effort and time involved for tracking



Branding

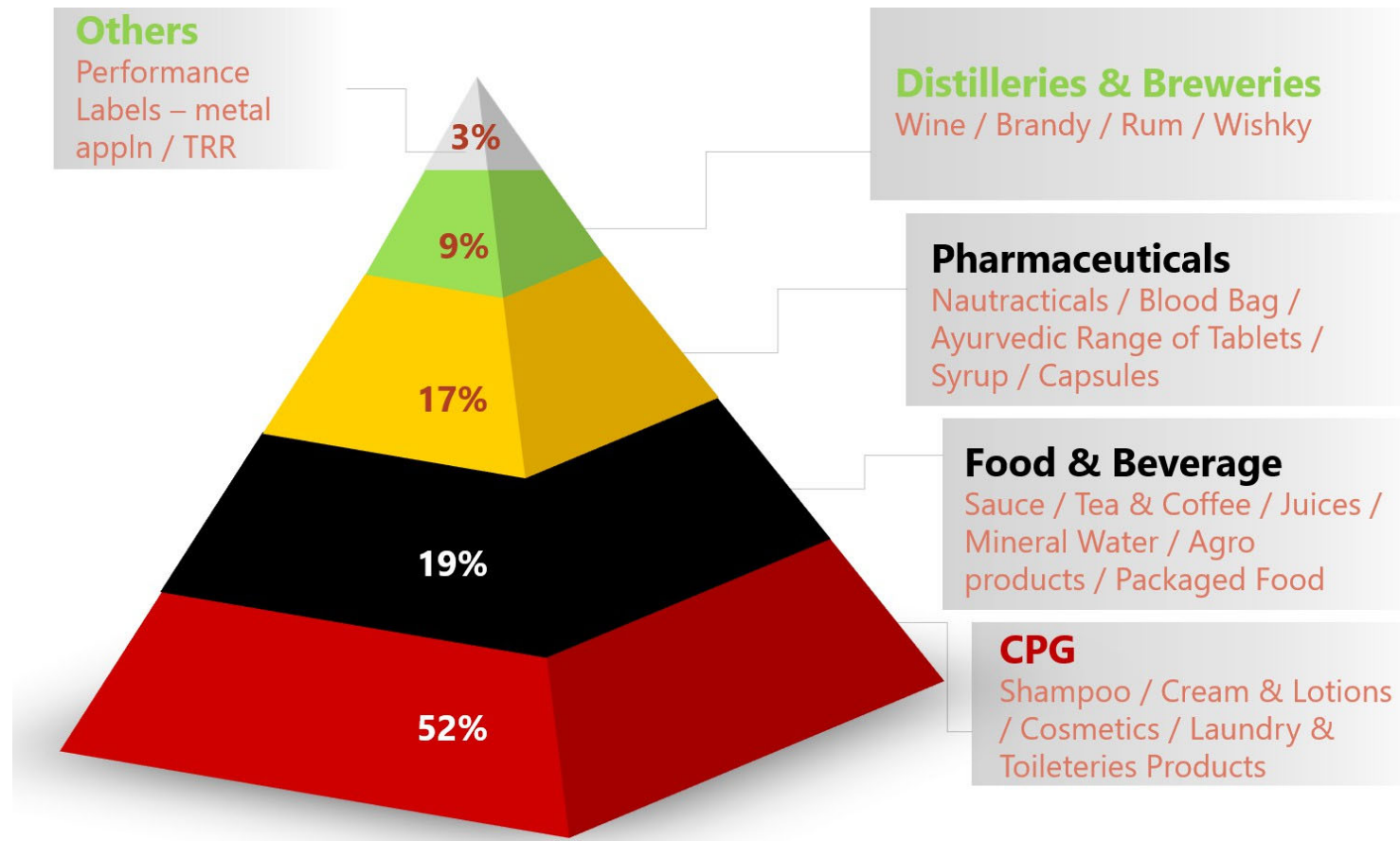
- Used for promoting the brand name on products
- Can be used as a marketing tool



Security

- Used for identifying the fakes/copies against original products
- Can be used for identifying any tampering with product

Segment Served by SIGNODE



Flexo Printing Press - Combination



- Speed 200 M/min
- Print Width 440 mm
- 12 Printing Station
- #2 Screen Units
- Hot Foil Station
- Cold Foil Station
- Auto Registration
- Quick Change-over

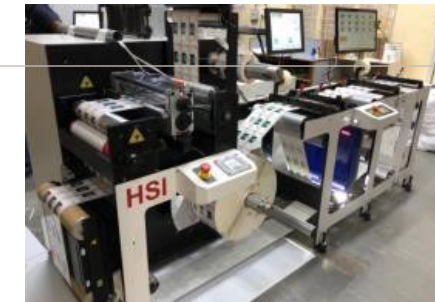
Process Machines



Flexo Plate Making



WIP-Printed Rolls



Slitter /
Inspection

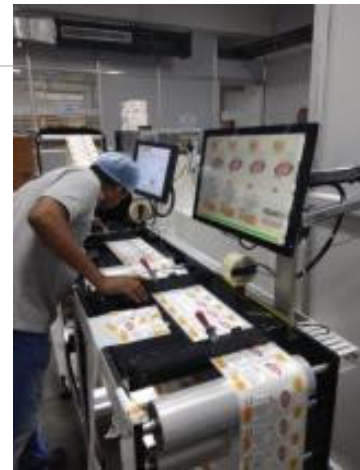


Plate
Mounting



UV Ink Mixer



Flexo
Label
Press



Packing & Finishing



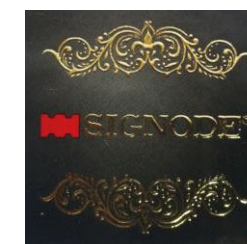
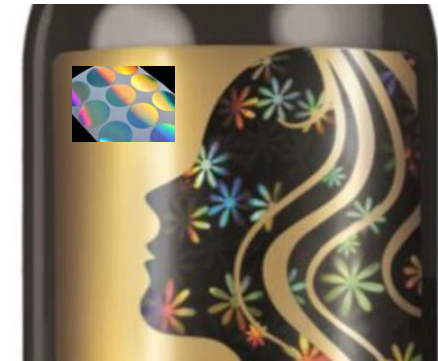
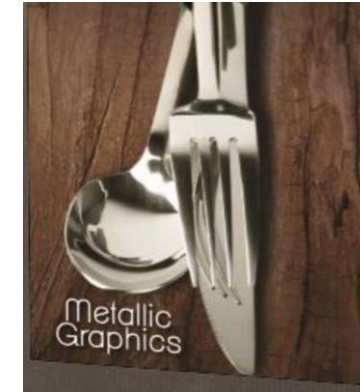
Budd
-Rolls



Process
Waste

Decoration Types – Differentiated Solutions

- Tactile - Raised effects
- Metallic Effects
- Holo-print Soft Touch
- Fragrance
- Silky Effect
- Fresnel Lens
- Doming Effect



Wet Wipes

- Premium Hygiene Products
 - Wet Tissues
 - Baby Wipes
- Multiple – Reclosing
- Retains the Perfume / Moisture
- Ease & Convenience Packaging



Tamper –Evident Labels



Security and Authentication



<https://www.youtube.com/watch?v=WBfl-JfrI4s>

- A broad anti-tamper and anti-counterfeiting portfolio
- Supports compliance with EU Directive 2011/62/EU, article 54 (o)
- Protects consumer safety and brand reputation
- Full technical support for “Layered” custom solutions
- Basic feature through to high-end technologies

Peel and Win – Promo labels



- Promotional labels play a vital role in boosting product sales and to clear surplus inventory of slow-moving products .
- Peel and win and scratch labels carry price message or offer when consumer buys the product and peels or scratches the label to claim the price.
- Scratch and Sniff labels also are part of such promotional labels – revealing scent of the product and connecting customer to the Brand.

Piggy Back Labels

- **Piggy Back Labels** are made up of multiple labels, where one label sits on top of the other label.

Piggy Back Label

Printed Face Stock
with Adhesive (die cut)

Printed Face Stock
with Adhesive

Liner

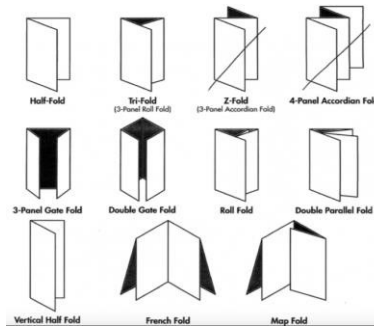
Adhesive

Liner



Booklet Labels

- **Booklet labels** contain multi-layer pages of additional text that are folded and applied as a single, small label
- The increased text matter as per the regulatory / statutory requirements



Track & Trace Labels



* RFID Labels - Label embedded with chip and Antenna and programmed for track and trace or for inventory Management. Often used in Big warehouses . Also used in Bag tags in Airlines for baggage tracking . Sensitive up to radius of 500 Mtrs for track and trace.

NFC labels - These are advance version of RFID and also uses chip which can contain information about product or other features and can be scanned to reveal information . Used widely in premium product promotions like Liquor and wine . NFC tags are now widely used in Toll gates for quick toll charge on the go.

Sustainable labels – Future



- Circular Economy is the way forward in labels and packaging.
- Use of Thinner Gauge materials leading to reduced CO2 emissions and water use.
- Waste matrix and Liner recycling for sustainability. Signode Wintek as you are aware are consuming 100% waste and converting it into Edge protectors and re use.
- Bio based films from Fossils .
- PCR – Post consumer recycled films.
- Wash off Labels – for container recycling.

Braille Labels

Marketing requirement to attract new sub-segment



Complicated Decoration



- > 10 Colours
- Pack Colour Match
- Multiple Foils
- #2 Screen
- Soft Look



Wash-Off Labels



- Recycling of Glass Bottles
- Labels comes-out in the Washing process
- Sustainable solutions – used lesser water / Heat & other utilities

No-Look Labels



- Premium Look - Transparency
- Stands-out in Shelf
- Product is Brand - Visibility

Interactive Labels : Augmented Reality Labels

AR Labels



Liner less Labels – Change Game



- Liner less labels is evolving technology and eliminates release liners totally. This means huge change game towards sustainable labelling without waste generation of release liners.
- Widely used in Supermarkets currently on direct labelling of Meat and food products.
- Simple rectangle and square labels without die cutting and primarily for retail market where label is primarily used for price scan .
- This technology is growing and will soon penetrate product labels as well and change towards sustainable labelling.

Recognition

Preferred Partner



Performance Excellence

South-Asia Region



Innovation & Decoration

Global Platform



Sustainability



THANK YOU

