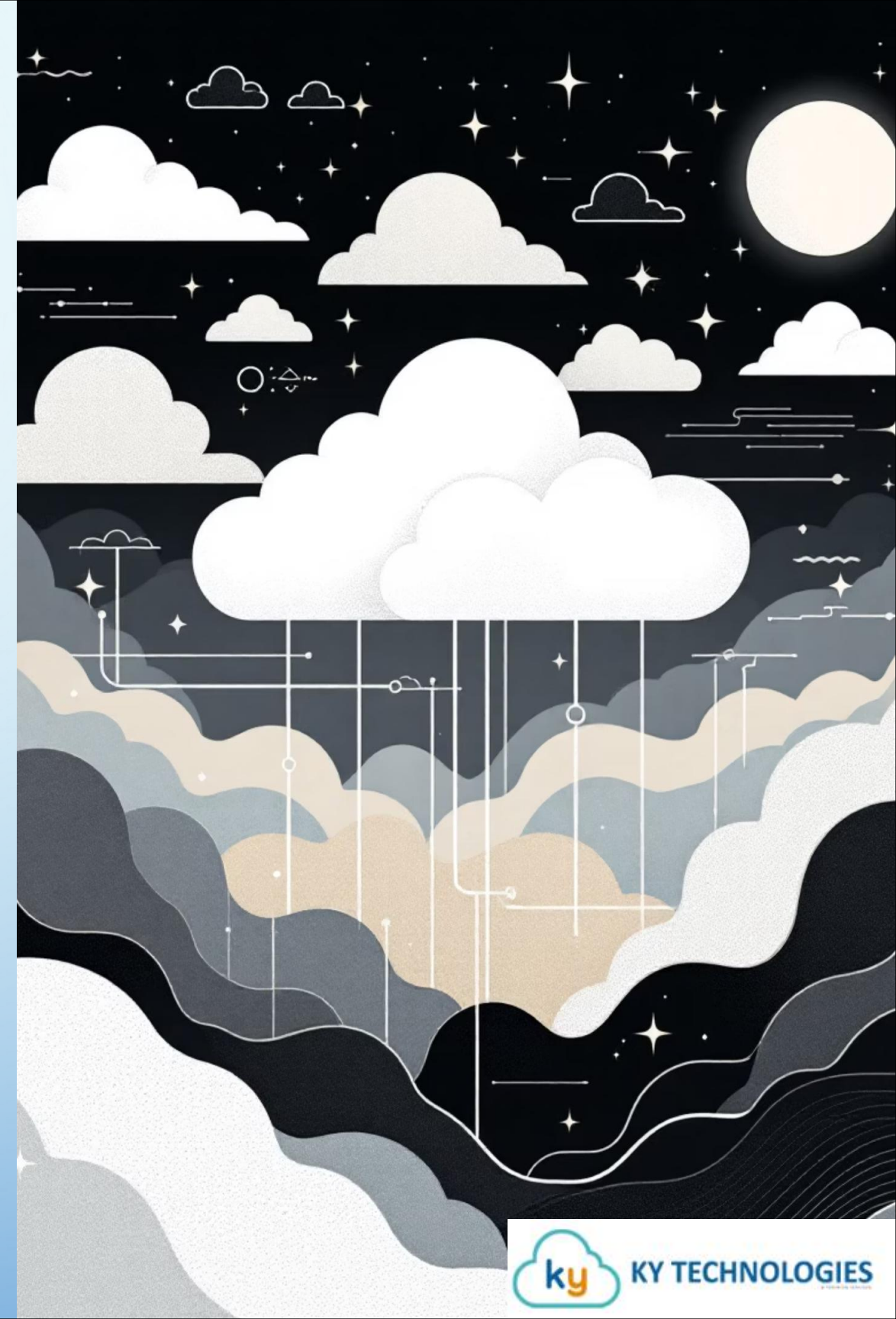


# Tihvo BPM: Empowering Global SMEs with Cloud Business Solutions

Discover Tihvo BPM, a comprehensive cloud-based business process management solution tailored specifically for the dynamic needs of Global small and medium enterprises. We offer intelligent automation and customizable workflows designed to streamline your operations and drive profitability.



# Introducing Tihvo BPM: Your Complete Business Solution

Tihvo BPM, built by KY Technologies, is an advanced software system designed to manage and maintain all functions of your business operations in real-time. It provides the tools to store, manage, and utilise crucial data, significantly enhancing enterprise value and profitability through streamlined processes.

It stands as a robust Enterprise Resource Planning (ERP) solution delivered entirely from the cloud.



# Key Modules & Capabilities



## Core BPM Functionality

Comprehensive business process management and automation.



## Human Resources (HRMS)

Full employee lifecycle management from onboarding to offboarding.



## SAP Integrated Solution

Integrate SAP and other third-party apps.



## Data Visualization And Reporting

Complete analytics, report and other business related documents



## Process Management

Effective process management and service management.



## Procurement & Supply Chain

End-to-end management of procurement workflows and supplier relations.

# Robust Technology & Targeted Reach

## Cutting-Edge Technology Stack

Tihvo BPM is built on modern, scalable technologies to ensure superior performance

- **Foundational Frameworks:** Angular, .NET core, PostgreSQL, Azure cloud, PowerBI or robust backend.
- **Dynamic UI:** AngularJS ensures intuitive and responsive user interfaces.
- **Cloud-Native:** Designed for optimal reliability and performance in the cloud.
- **Accessibility:** Full support for both mobile response and web applications.

## Our Target Audience: Global SMEs

We cater to a wide range of Global businesses, offering tailored solutions for:

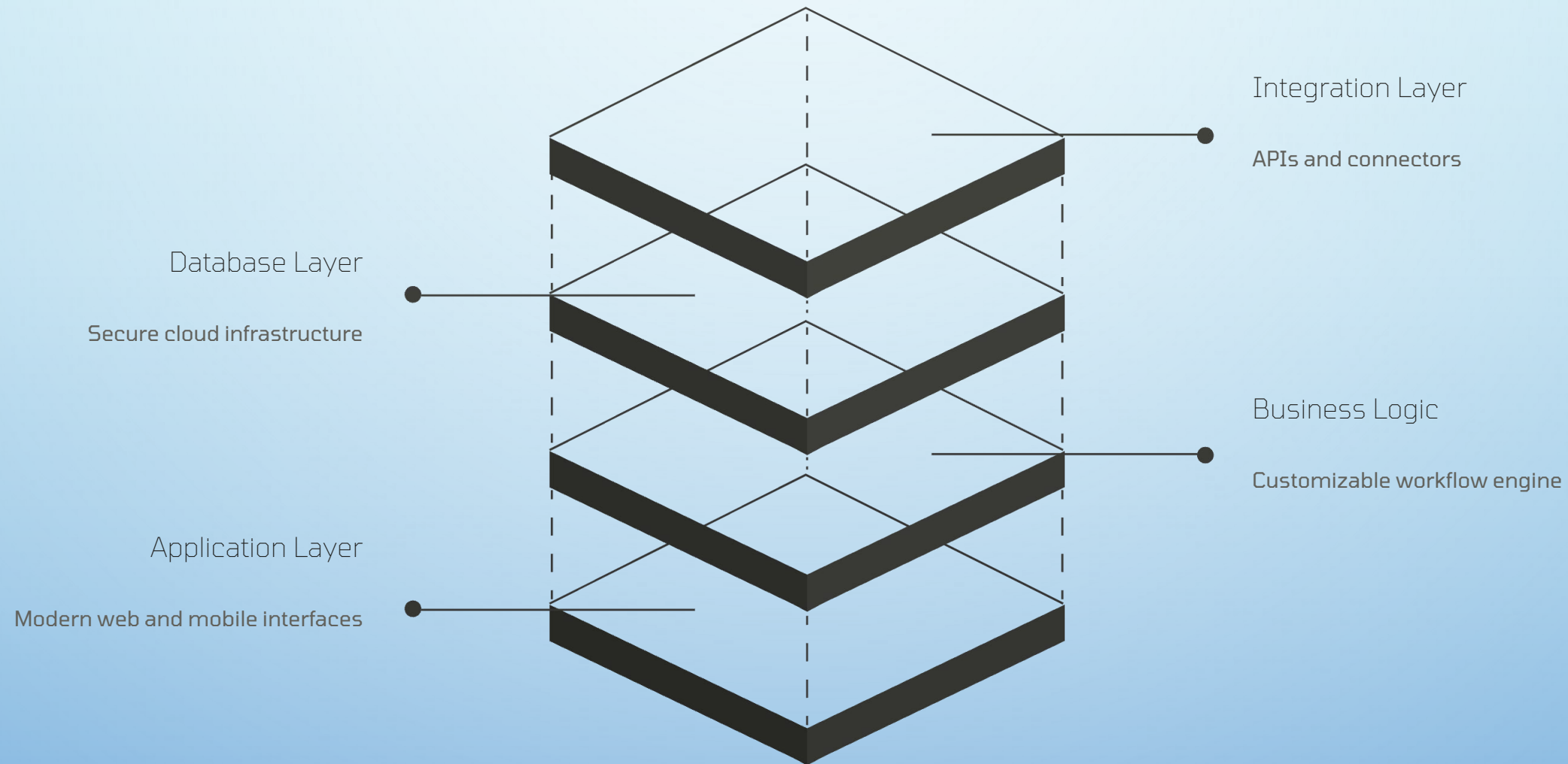
- **Micro Businesses:** Up to 50 employees.
- **Small Enterprises:** 50-100 employees.
- **Medium Companies:** 100-200 employees.



Our solutions are particularly suited for Manufacturing, Retail & eCommerce, Logistics & Distribution, Construction, and Healthcare industries.

# Cloud-First Solution Architecture

Tihvo BPM's 100% cloud-based architecture eliminates the need for expensive on-premise infrastructure, delivering enterprise-grade security and reliability from day one.



Our architecture supports extensive third-party integrations, including payment gateways, accounting software, CRM systems, document management, and communication platforms, ensuring seamless connectivity across your business ecosystem.

# Robust Security & Uninterrupted Accessibility

## Enhanced Data Protection

Enterprise-grade encryption and secure data storage protect your sensitive information.

## Granular Access Control

Role-based user permissions and multi-factor authentication for secure access.

## Comprehensive Compliance

GDPR compliant with detailed audit trails and robust data governance protocols.

## Reliable Backup & Recovery

Automated backup and disaster recovery protocols safeguard your data.

## Dynamic Scalability

Resources scale dynamically to support your business growth seamlessly.

## High Availability

Enjoy 99.9% uptime guarantee through redundant systems and robust infrastructure.

## Global Access

Secure access from anywhere, empowering your remote workforce.



# Streamlined Operations: Core Use Cases & Rapid Customisation

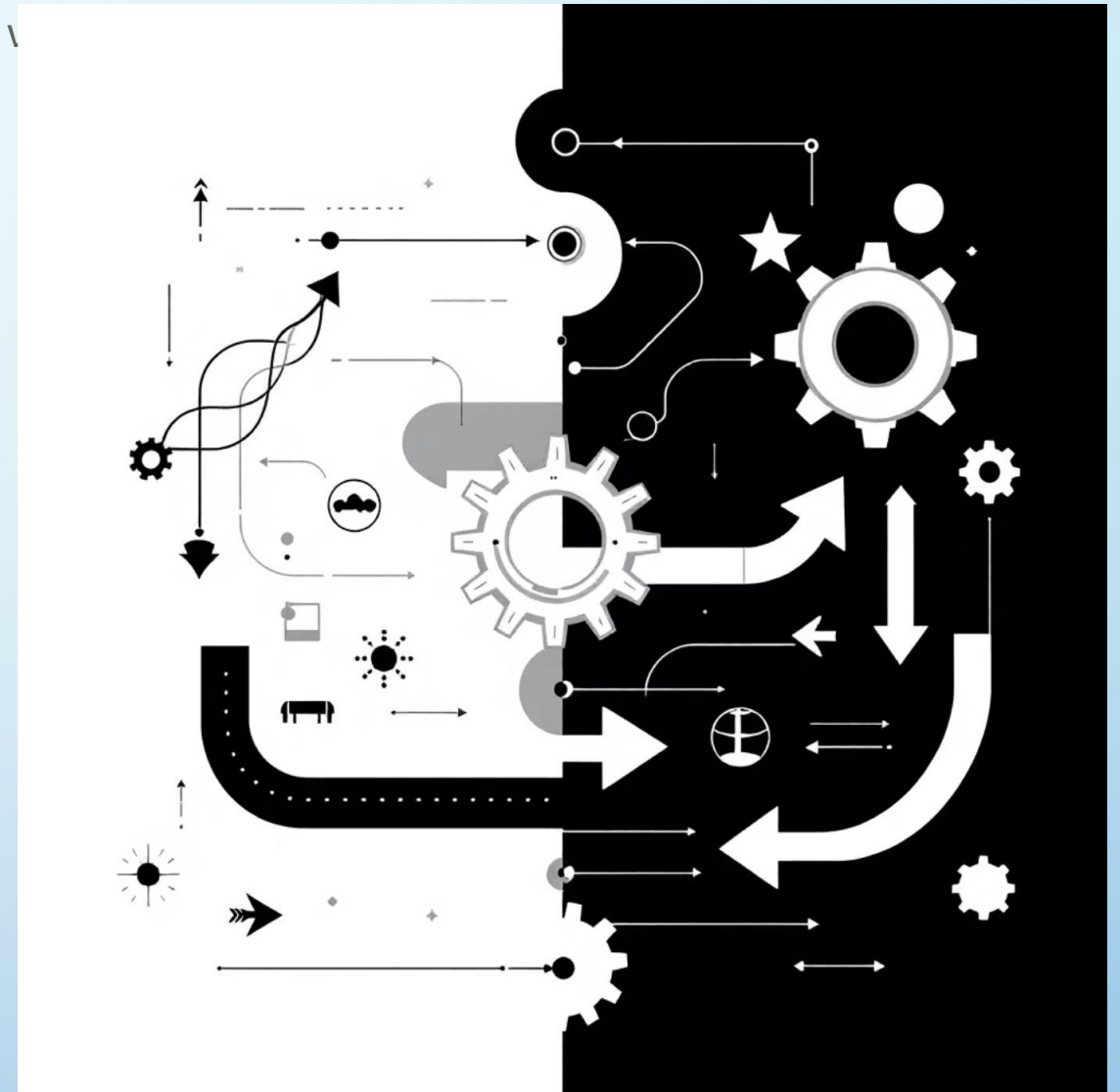
Tihvo BPM delivers immediate impact across key business functions with automated workflows

- **Automated Purchase-to-Pay**  
Complete automation of your procurement cycle, from requisition to payment.
- **Efficient Leave Management**  
Configurable leave policies with streamlined approval workflows for HR.
- **Real-Time Inventory Tracking**  
Monitor stock levels with automated reorder points to prevent shortages.
- **Simplified Advance Tracking**  
Manage employee advance requests and approvals effortlessly.

## Rapid Customisation: In Minutes, Not Months

Our platform is engineered for agility, allowing you to adapt quickly:

- **30-Minute Workflow Creation:** Configure complex business processes rapidly.
- **Automated Document Generation:** Create invoices and documents effortlessly.
- **Seamless Data Synchronisation:** Auto-fetch integrations ensure data consistency.



# Industry-Specific Solutions & Future-Ready Features



## Manufacturing

BOM management, production planning, quality control, batch tracking.



## Retail & eCommerce

Multi-channel inventory, order processing, sales analytics, supplier management.



## Healthcare

Patient record management, compliance tracking, staff scheduling, equipment management.



## Construction

Project workflows, resource allocation, compliance documentation, subcontractor management.

---

## Future-Ready Capabilities

- **AI Integration Capability:** Designed to seamlessly incorporate artificial intelligence solutions as your needs evolve.
- **Advanced Analytics Framework:** Customisable reporting and business intelligence tools for insightful decision-making.
- **Powerful Automation Engine:** Reduce manual tasks and errors with intelligent workflow automation.



# Our Unique Value Proposition



## Exceptional Cost-Effectiveness

Achieve up to 40% cost reduction compared to traditional BPM solutions, leveraging our competitive offshore development model and eliminating hardware expenses.



## Unmatched Customisation Speed

Benefit from 30-minute workflow customisation – the fastest in the industry – allowing real-time process modification without technical expertise.



## Comprehensive IT Partnership

Beyond BPM, we offer a full suite of IT services: custom application development, website solutions, IT resource augmentation, and expert technology consulting.



## Proven Offshore Support

Receive 24/7 support from our skilled offshore teams, complemented by Global representation through our Resolis partnership, ensuring seamless communication and cultural understanding.

# Partnering for Your Digital Transformation

## Flexible Subscription & Billing

Tihvo BPM offers adaptable pricing tailored to your needs:

- **Annual Subscription:** Predictable yearly licensing with full module access.
- **Workflow-Based Billing:** Pay-per-process model based on complexity and usage.

We include comprehensive onboarding, training, and data migration support. New clients can benefit from our **Startup-Friendly Trial Pricing**, offering a 60% discount for the initial 2-3 months.

## Dedicated Support Services

Choose from various support tiers, including 24/7 technical assistance, priority response, and dedicated account management, ensuring continuous operational excellence.



**"Tihvo BPM combines enterprise-grade functionality with the flexibility and cost-effectiveness that Global SMEs truly demand."**

Ready to Revolutionise Your Business?

Contact us today to schedule your personalised demonstration and discover how Tihvo BPM can transform your operations.

[Schedule a Demo](#)

[Learn More](#)